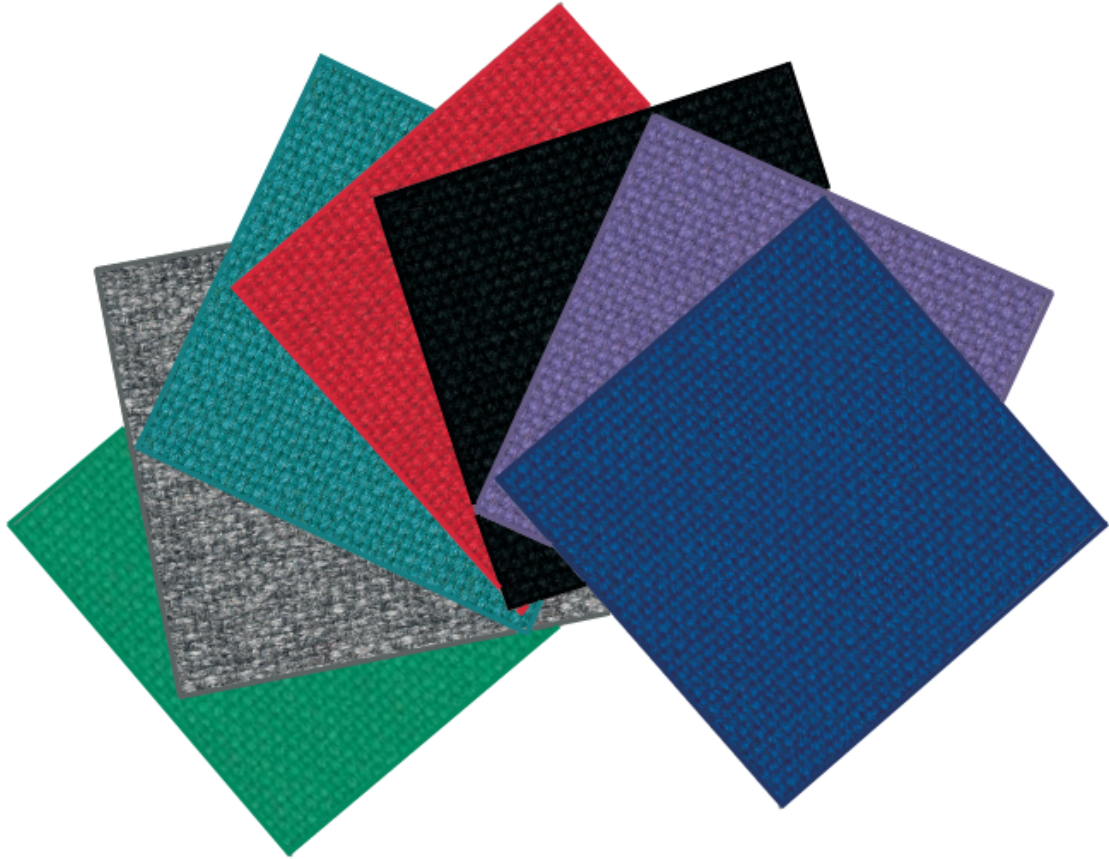


your complete office solution...



# Camira Cara

design ▶ supply ▶ deliver ▶ install



# Universal Office Solutions

## Camira - Cara



Panels



Acoustic

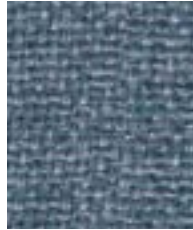


Year guarantee



**Spray**

EJ033



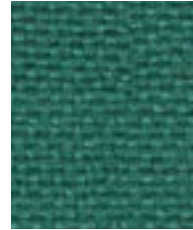
**Ronay**

EJ189



**Dolphin**

EJ105



**Carron**

EJ015



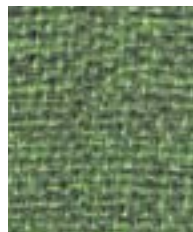
**Galilee**

EJ125



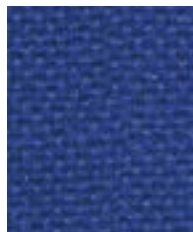
**Inverness**

EJ175



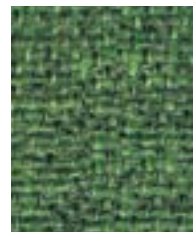
**Fair Isle**

EJ186



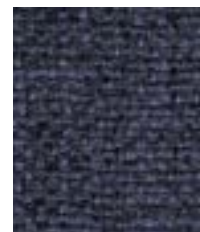
**Adriatic**

EJ154



**Staffa**

EJ185



**Easdale**

EJ188



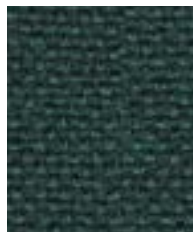
**Lossie**

EJ197



**Tummel**

EJ038



**Lora**

EJ187



**Cluanie**

EJ180



**Walten**

EJ011



**Pitlochry**

EJ076



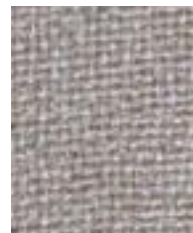
**Vit**

EJ184



**Glass**

EJ004



**Lomond**

EJ192



**Shetland**

EJ191



**Hillswick**

EJ190



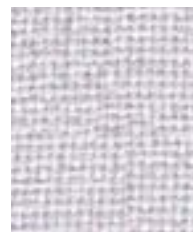
**Beltane**

EJ193



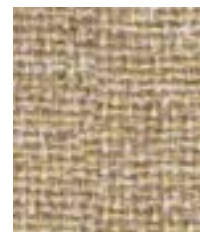
**Chaucer**

EJ172



**Clan**

EJ169



**Austen**

EJ173

Photographic fabric scans are not colour accurate. Always request actual fabric samples before ordering.

Sales: Tel: 01363 775411    Email: [sales@uosltd.co.uk](mailto:sales@uosltd.co.uk)    [www.universalofficesolutions.co.uk](http://www.universalofficesolutions.co.uk)



**Maree**

EJ195



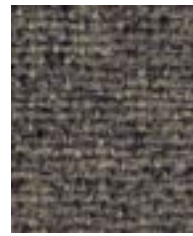
**Portland**

EJ016



**Denny**

EJ196



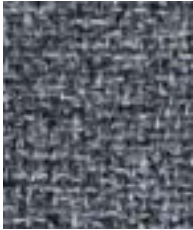
**Lerwick**

EJ194



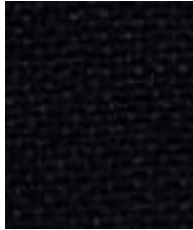
**Merrick**

EJ048



**Lead**

EJ104



**Black**

EJ138

## Technical information

### Composition

100% Polypropylene

### Environment

Certified to the EU Ecolabel

### Width

170 cm minimum

### Weight

220 g/m<sup>2</sup> ±5% (375 g/lin.m ±5%)

### Flammability

EN 1021-1 (cigarette)  
BS 476 Part 7 Class 1  
EN 13501-1 Adhered Class B, s2, d0  
*Note: Flammability performance is dependent on components used.*

### Light Fastness

6 (ISO 105 - B02)

### Fastness to Rubbing

Wet: 4, Dry: 4 (ISO 105 - X12)

### Acoustic Properties

Acoustically transparent. Acoustic graphs available upon request

### Cleaning

Vacuum regularly. Wipe clean with a damp cloth or shampoo using proprietary upholstery shampoo.

Please note that seam performance is dependent on seam construction and needle and thread type. We recommend that appropriate sewing advice be taken.

Batch to batch variations in shade may occur within commercial tolerances. We reserve the right to alter technical specifications without notice. The Unregistered Design Rights and the Copyright in all designs are the exclusive property of Camira Fabrics Limited.

Photographic fabric scans are not colour accurate. Always request actual fabric samples before ordering.

**Sales:** Tel: 01363 775411

**Email:** [sales@uosltd.co.uk](mailto:sales@uosltd.co.uk)

**www.**[universalofficesolutions.co.uk](http://universalofficesolutions.co.uk)